

BULLETIN

IP 2004001

Subject : IP Address Setting Knob Removal of H3U PLC

Document Category : Bulletin

Product Category : PLC

Issued By : Marx

Security Level : Normal

Revision History

Revision	Date	Revising Author	Authorized By	Released for Website?	Remarks
1.0	7 Apr'2020	Marx	David		

Summary of contents

Due to a sharp decline in supply of the knob switch, INOVANCE suppliers are far from meeting the requirements. Therefore, INOVANCE's PLC product line had to make the decision to remove this IP address setting knob switch of H3U PLC.

There are 5 models involved as below:
 H3U-3232MT/R, H3U-3624MT/R, H3U-0808PM

This change covers the corresponding overseas '-INT' version^[1].

Apart from above models, other H3U models do not have knob switch, so this change do not affect them.

1. Description of the change.

The detailed change is to remove the internal knob switch, and there is no any change in the outer appearance. The specific differences in the internal structure and appearance are shown in the following figures:



Fig 1. Internal structure before change



Fig 2. Internal structure during transition period



Fig 3. Internal structure after change



Fig 4. Outer appearance of the whole PLC keeps unchanged

2. Setting IP by software.

If customers previously used the software (AutoShop) to set the IP address, then this change has no impact, we just advise them to continue to use this way to set IP address for new PLC which without knob switch. However, if customers used knob switch to set IP address previously, and when they suddenly find that there is no knob switch on latest H3U PLC, please guide customers to set IP by software. The method is by connecting PLC with PC via USB, serial port or Ethernet and then change the IP address.

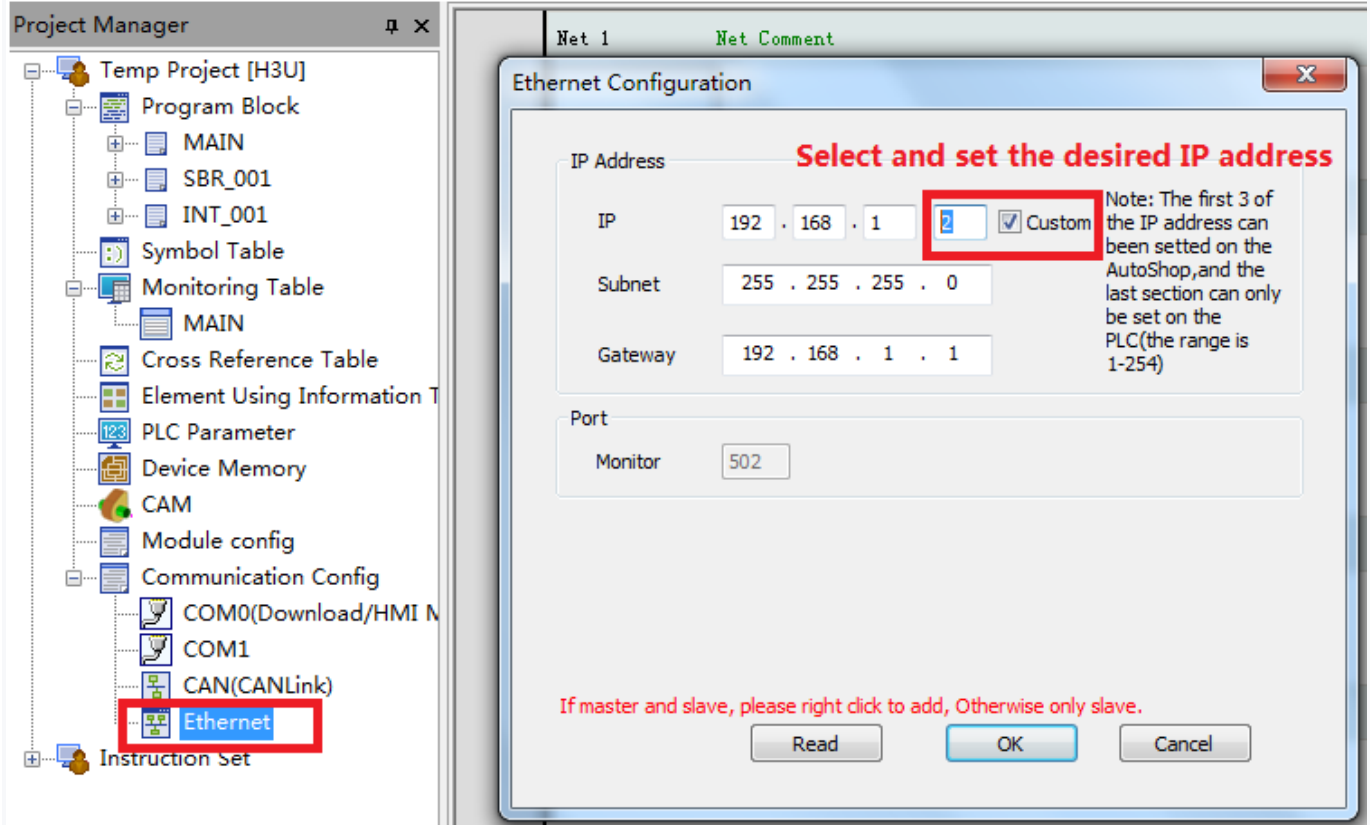


Fig 5. Setting IP address by AutoShop programming software

3. Setting IP by DIP switches.

For the products H3U-3232MT/R, H3U-3624MT/R, H3U-0808PM after changed (without knob switch), if customers don't set IP address by software, the IP address (the last segment) can be determined by DIP switches (Bit 5~Bit0, as shown in Fig 6).

Please specially pay attention to below two aspects for this function:

1. By default, (Bit5~Bit0) DIP switches are used for setting the station number of CAN communication. Therefore, here we just reuse them to define the IP address (the last segment). If CAN communication is used, it is better to set IP address by AutoShop software to avoid conflict.
2. Only when software version is "24312" or above, the products can support setting IP address (the last segment) by DIP switches.

Baud rate setting: 2Bits			Station number setting: 6Bits					
Baud rate	Bit 7	Bit 6	Bit 5	Bit 4	Bit 3	Bit 2	Bit 1	Bit 0
DIP Swith	1	2	3	4	5	6	7	8
500K	0	0	The value is set in the binary system: For example, Bit5-Bit0 is 011011. It means that the station number is 27.					
100K	0	1						
1M	1	0						
50K	1	1						

Fig 6. Setting IP address by DIP switches

4. Default IP settings.

For the original H3U-3232/3624 PLC with knob switch, the default IP address is 192.168.1.89 (the last segment is determined by knob switches).

For the latest H3U without knob switch, the default IP address is 192.168.1.1 (the last segment is determined by DIP switches). In addition, please specially take note of a special operation: when all DIP switches (Bit7~Bit0) are set to ON, IP address will be automatically restored to 192.168.1.1. All segments of the IP address will be affected. Only for software version “24312” or later, the products can support this special operation.

5. Product switching strategy.

This change almost doesn’t affect the normal use of these products, so INOVANCE factory will carry out natural switching strategy and not sorting stock. During this switching period, customers may receive two kinds of products with or without knob switch. Local engineers should explain well this change to customers, and get their understanding.

If you have any questions, please contact PMTS.

Please Notice hereby.

Annex.

[1] Below table lists the 3 models for overseas market affected by this change:

Material code	Model number	Description
01440203	H3U-0808PMRTA-INT	H3U PLC Module, 220VAC power supply, Digital inputs x 8 (200kHz high-speed inputs x 3), Digital outputs x 8 (500kHz high-speed outputs x 3), RS485 x 1, RS422 x 1, CAN port x 1, Ethernet port x 1, USB x 1, supporting 3-axis E-CAM
01440204	H3U-3232MT-INT	H3U PLC Module, 220VAC power supply, Digital inputs x 32 (200kHz high-speed inputs x 8), Transistor outputs x 32 (200kHz high-speed outputs x 5), RS485 x 1, RS422 x 1, CAN port x 1, Ethernet port x 1, USB x 1
01440205	H3U-3232MR-INT	H3U PLC Module, 220VAC power supply, Digital inputs x 32 (200kHz high-speed inputs x 8), Relay outputs x 32, RS485 x 1, RS422 x 1, CAN port x 1, Ethernet port x 1, USB x 1